



# Annual Report

2022-2023

## Our Mission

**Excitement**  
in children through  
learning

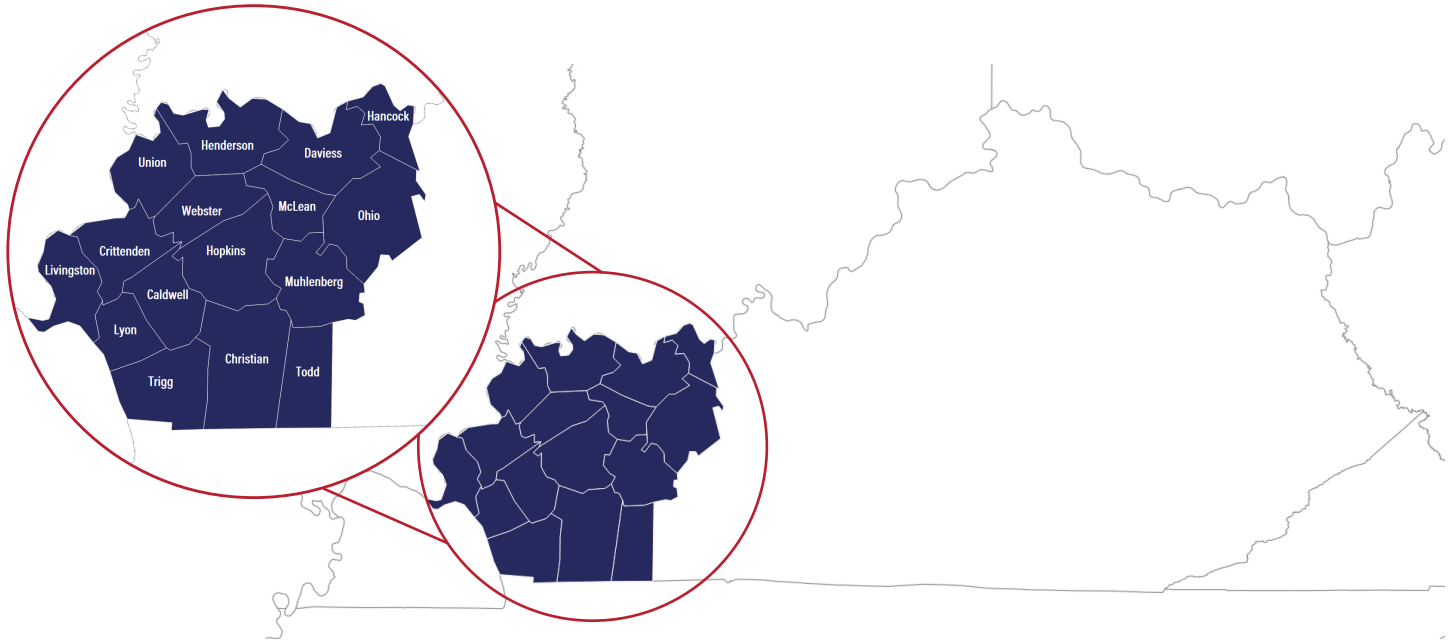
**Empowerment**  
in families through  
strengths

**Enhancement**  
in communities through  
participation

**Enrichment**  
in staff  
through experiences

# About Us

The Audubon Area Head Start program consists of Head Start, Early Head Start, Child Care Partnerships (EHS-CCP), and Western Kentucky University Delegate (WKU). Program options include center-based classrooms, home-based visitation, a combination model, and child care partners. We promote school readiness for at-risk children from birth to age five by providing comprehensive child and family centered services that foster the healthy development of children throughout 16 counties in western Kentucky.



## Program Goals

### Health

To ensure all families have access to a support system designed to assist children and engage families in comprehensive services including health, nutrition, mental health, and disabilities.

### Child Development

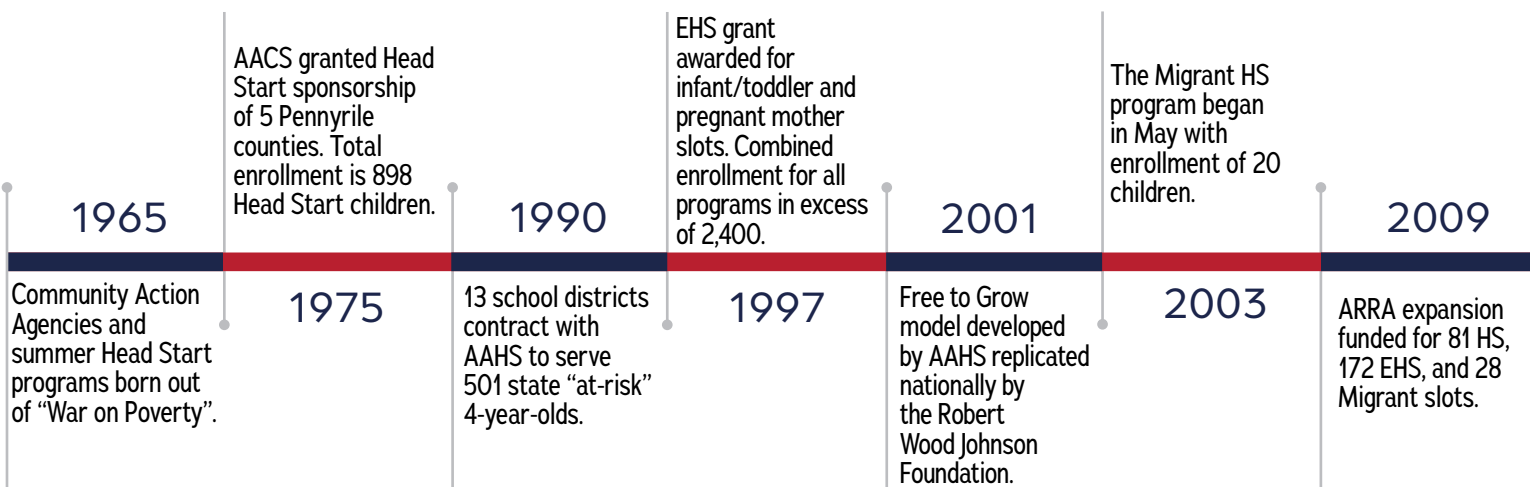
To provide children and their families comprehensive services that foster children's development and competence in all learning areas to support the foundation for school readiness during the early years.

### Parent Engagement

To support parents/guardians in their role as primary caregivers and educators of their children, in meeting family goals, and provide support so parents may achieve self reliance and self sufficiency.

### Program Design and Management

To ensure comprehensive services are provided to Head Start children and families by maintaining all federal, state, and local regulations and ensuring a system that guarantees proper planning and efficient program operation.

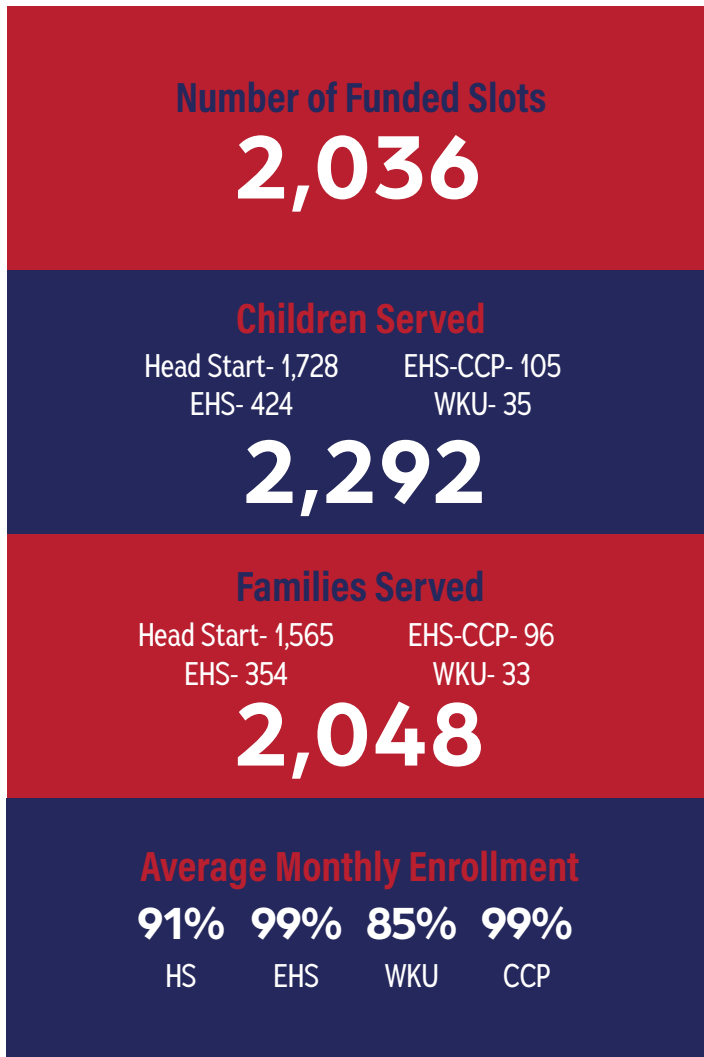


# Stats

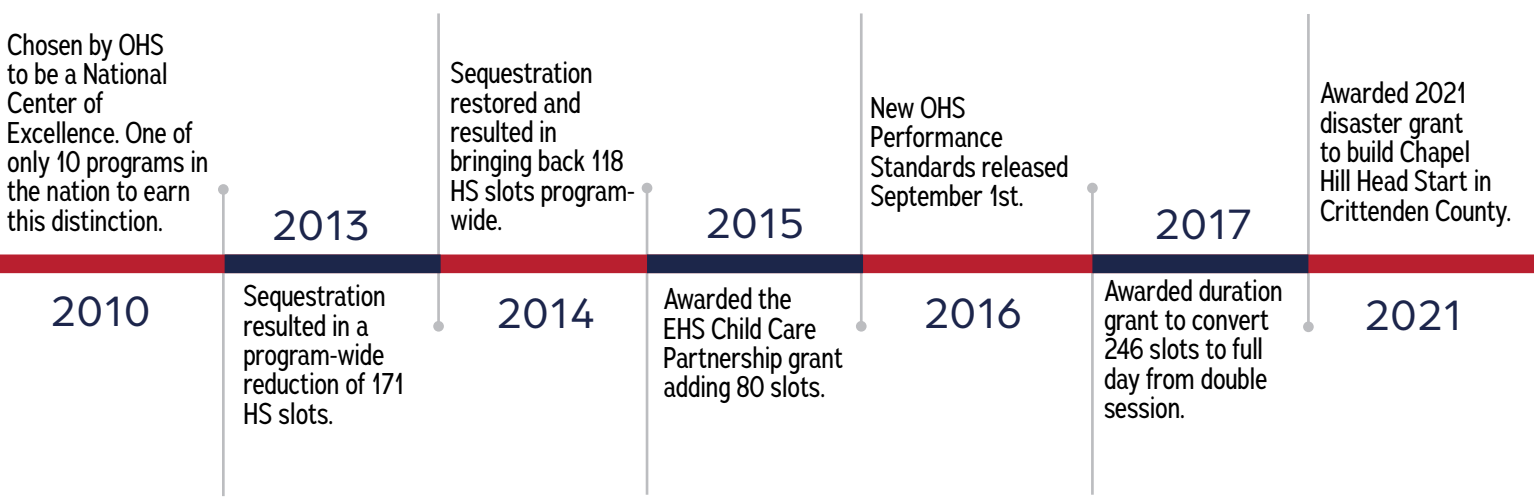
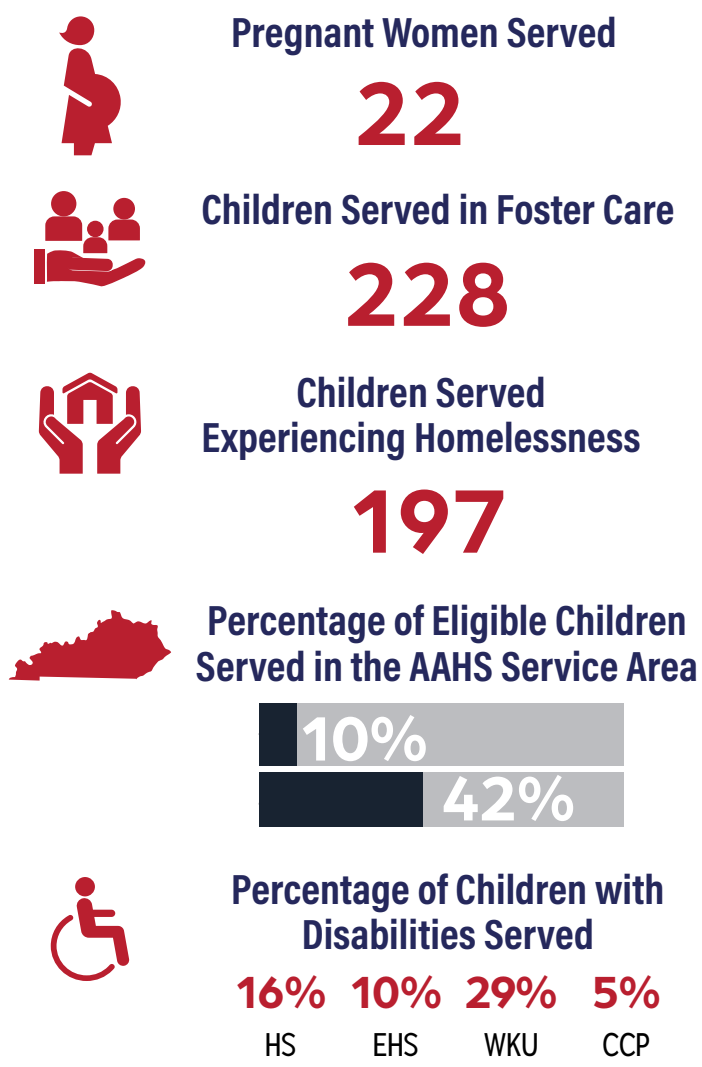
Audubon Area Head Start uses selection criteria updated annually to identify and enroll children from the most at-risk backgrounds.

In 2022-2023, highest priority was given to children in foster care, families receiving public assistance, and those experiencing homelessness. Other targeted populations included children with disabilities and pregnant women.

## Enrollment Details



## Enrollment Demographics





## Parent, Family, & Community Services

Audubon Area Head Start collaborates with families, community members, and other local agencies to identify common goals, align resources, and share data for continuous improvement in helping communities thrive. Parents enter a partnership with AAHS staff on their children's behalf.

### Parent, Family, and Community Engagement Goals

AAHS utilizes the Office of Head Start's research-based Parent, Family, and Community Engagement (PFCE) Framework, an organizational guide for collaboration to promote positive, long-lasting outcomes for children and families. The PFCE Framework specifies seven family outcomes that guide staff as they partner with families to set and track progress on goals parents set for themselves and their children.



#### Family Well-Being

Families become safer and healthy, and have increased financial security.



#### Positive Parent-Child Relationship

Parents and families will develop warm relationships that nurture their child's learning and development.



#### Families as Lifelong Educators

Parents and families participate in the everyday learning of their children at home, school and in their communities.



#### Family Engagement in Transitions

Families are provided with opportunities to advocate for their children as they grow and enter new early learning environments.



#### Families as Learners

Parents and families advance their own learning interests through education, training and other experiences that support their parenting, careers, and life goals.



#### Families as Advocates and Leaders

Families Participate in leadership development and decision-making within the Head Start program and their communities.

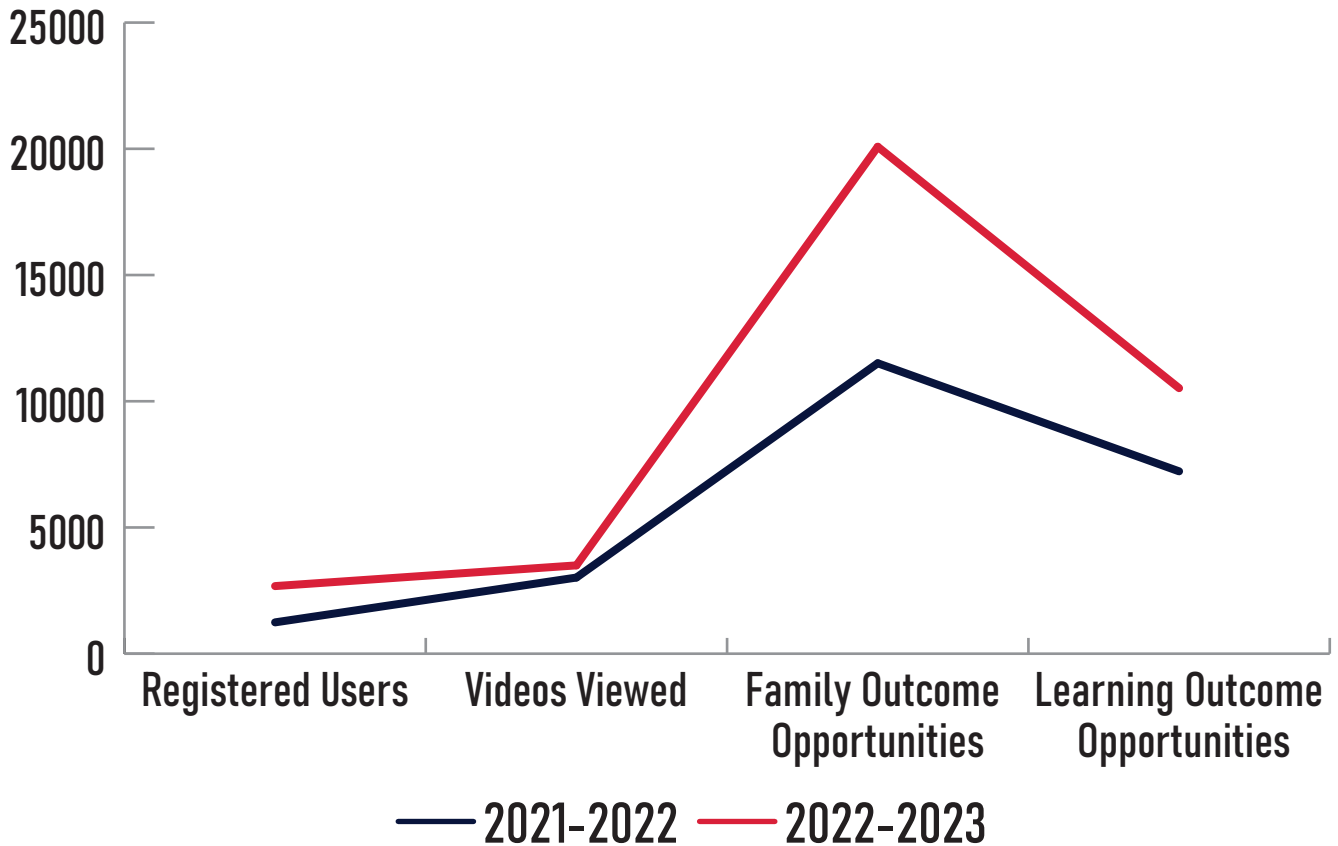


#### Family Connections to Peers and Community

Families connect with each other and with the larger community to strengthen support systems.

## Curriculum

AAHS provides parents the ReadyRosie parenting curriculum, which is an evidence and research-based family engagement and early learning resource that the parent receives virtually. Age-appropriate playlists are sent out weekly to parents, with additional playlists to address individualized family needs. Playlist videos consist of short “modeled moments” for the parent to watch, practice with their child, and provide feedback. These model moments encourage positive two-way communication between the parent/guardian and child. Hard copy materials are also available to families who are unable to participate virtually. ReadyRosie not only aligns with the PFCE Framework, but also with the Head Start Early Learning Outcomes Framework.



## Program Services Provided

**1,099** families

received at least 1 of the following program services to promote family outcomes:

- Emergency/crisis intervention
- Housing assistance
- Asset building services
- Mental health services
- Substance misuse prevention
- Substance misuse treatment
- English as a Second Language (ESL) training
- Assistance with enrolling into an education or job training program
- Research-based parenting curriculum
- Involvement in discussing their child’s screening and assessment results and their child’s progress
- Supporting transitions between programs
- Education on preventive medical and oral health
- Education on health and developmental consequences of tobacco product use
- Education on nutrition
- Education on postpartum care
- Education on relationship/marriage
- Assistance to families of incarcerated individuals

# Education

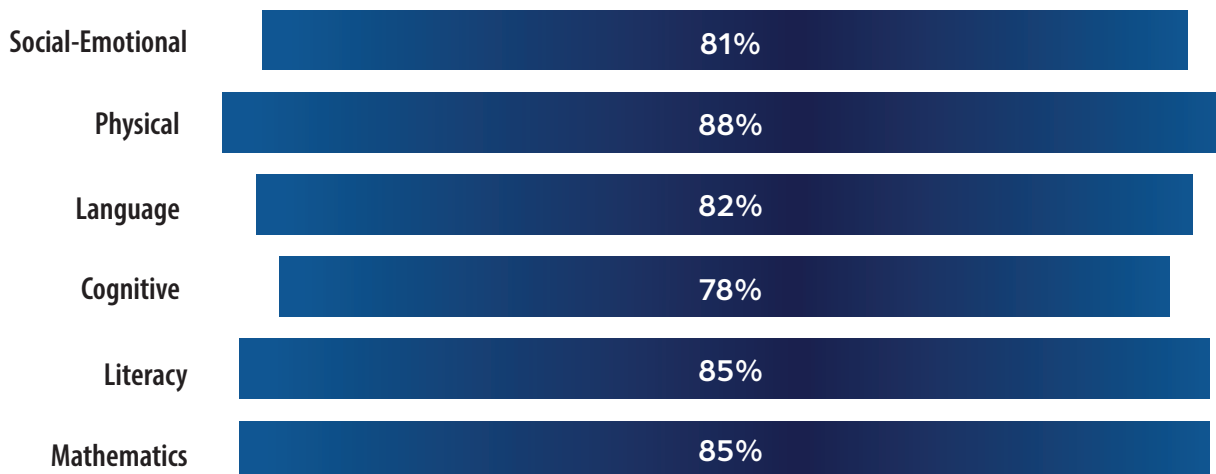
## School Readiness Goals

<b>Physical Development</b> Children will use their large and small muscles. They will also use healthy and safe habits.	<b>Language Development</b> Children will be able to understand and use expanded language to express their wants and needs, to engage in conversations, and follow directions.	<b>Social and Emotional Development</b> Children will learn how to recognize and regulate their feelings. They will also develop positive relationships with adults and peers.	<b>Literacy</b> Children will have knowledge of print and know that print is meaningful.	<b>Approaches to Learning</b> Children will demonstrate flexibility, inventiveness, curiosity, motivation, persistence, and engagement in learning.	<b>Cognition and General Knowledge</b> Children will use math in everyday routines to count, compare, pattern, and problem solve.
---	---	---	---	--	--

## Curriculum

At Audubon Area Head Start, The Creative Curriculum for Infants, Toddlers, and Twos is used in Early Head Start. The Creative Curriculum for Preschool is used in our preschool classrooms. These curricula are research-based which allows and encourages teachers to involve children in their own learning by choosing activities and topics that are meaningful to the children. This approach ensures that children make gains in all developmental domains outlined in the Kentucky Department of Education's Early Childhood Learning Standards and the Head Start Early Learning Outcomes Framework.

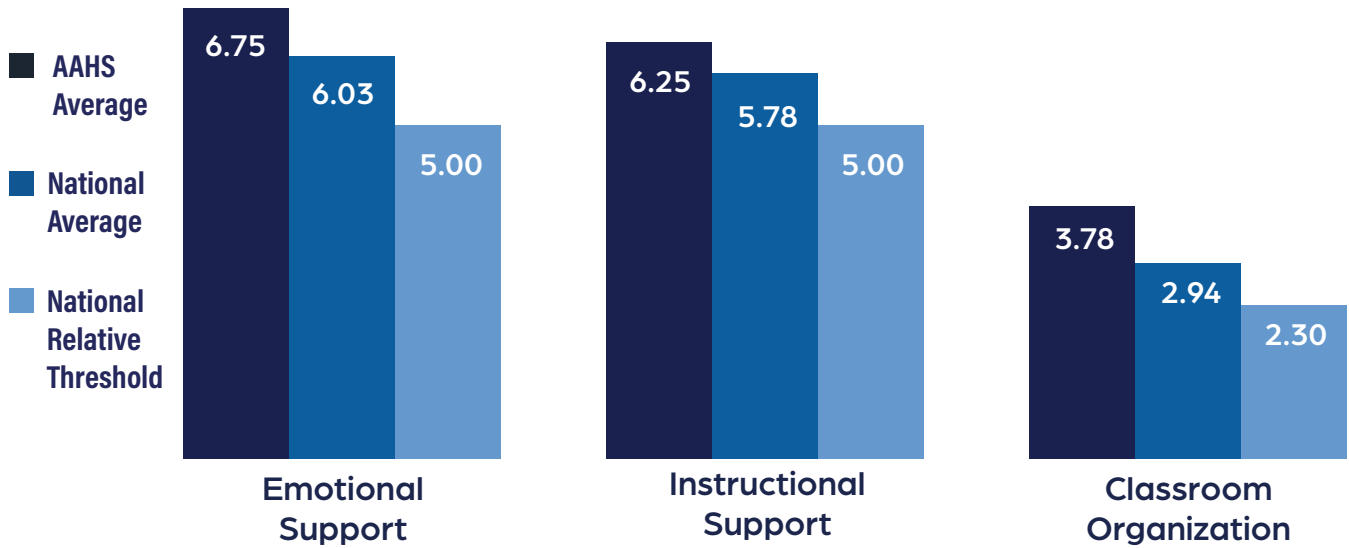
## Percent of Children Ready for School



My Teaching Strategies is the authentic, observational assessment system used by Audubon Area Head Start. It aligns with The Creative Curriculum and is used to document children's development and learning over time. We are able to collect and gather child outcome information to guide program planning and professional development. Our teachers complete a comprehensive assessment on each child three times per year. Teaching staff assess the work collected for each child's portfolio and determine the skill level of children on various learning outcomes. They use this information to design activities that support and encourage individual skill development. The results of each assessment are shared through home visits and parent teacher conferences.

## Class

The Classroom Assessment Scoring System (CLASS) assesses interactions between teachers and children in ten dimensions within three domains. The Office of Head Start believes the domains of quality measured by CLASS remain central to its approach to child development and education and serve as important indicators of the future school readiness of all Head Start children.



### Domains



## Dual Language Learners

Who are dual language learners? According to the Office of Head Start, “Dual language learners are children learning two or more languages at the same time, as well as those learning a second language while continuing to develop their first (or home) language.”

Spanish	110
Far Eastern Asian Language	6
Other	9
African Languages	1
Middle Eastern Languages	1
Central American	1
English learning another language	45

AAHS has  
**173**  
Dual Language  
Learners



# Health

Enrolled children and pregnant mothers receive comprehensive health services including medical, dental, mental health, nutritional and prenatal assistance. Staff work with parents to ensure children are up-to-date on medical and dental requirements outlined in the Kentucky Early Periodic Screening Diagnostic Treatment Plan (EPSDT).

A wide range of partners including pediatricians, dentists, health departments, managed care organizations and hospitals work with Head Start program staff to meet the health care needs of children and pregnant mothers. Children with special health care needs are welcomed into the program.

We partner with First Steps and local school districts to make certain children receive specialized therapies addressing individualized needs. Nutritional needs of children are evaluated, individualized and met on a daily basis.

Health literacy events are implemented to educate families on diabetes, colds vs. flu, when to take their child to the doctor and nutrition as it relates to healthy brain development and healthy eating. Other parent health activities focus on the importance of early childhood health screenings.

<b>2022-2023 Health and Dental Summary</b>	<b>HS</b>	<b>EHS</b>	<b>EHS-CCP</b>	<b>WKU</b>
With Health Insurance	98%	99%	100%	100%
With a Medical Home	99%	100%	100%	100%
Up-to-Date on EPSDT Well-Child Schedule	78%	64%	68%	86%
Up-to-Date on Current Immunizations	100%	99%	100%	100%
With Dental Home	99%	100%	100%	100%
Receiving a Dental Exam	68%	–	–	80%

# Federal Review

From June 27, 2022 to July 1, 2022, the Administration for Children and Families (ACF) conducted a Focus Area Two (FA2) monitoring review of the Audubon Area Community Services, Inc. Head Start, Early Head Start, and Early Head Start Child Care Partnership programs. The FA2 review allows the OHS to understand how programs are progressing in providing services in the 5-year grant cycle. The resulting report contains information about the grantee's performance and compliance with the requirements of the Head Start Program Performance Standards (HSPPS) or Public Law 110-134, Improving Head Start for School Readiness Act of 2007. The report for Audubon Area Community Services, Inc. Head Start and Early Head Start programs contained no Opportunity for Continuous Improvement, no Area of Concern, no Area of Noncompliance, and no Deficiencies.

# Community Assessment

The AAHS Community Assessment provides a snapshot of the service region and identifies characteristics which may have a significant impact on agency planning and program development. The AAHS Community Assessment must guide decisions based on the status of eligible families and the community settings within the service area. A full community assessment must be completed every 5 years with annual updates in between. The last full community assessment was completed in 2023 covering the 2022-2023 school year and can be found on the Audubon Area Head Start website at <http://www.audubon-area.com>.



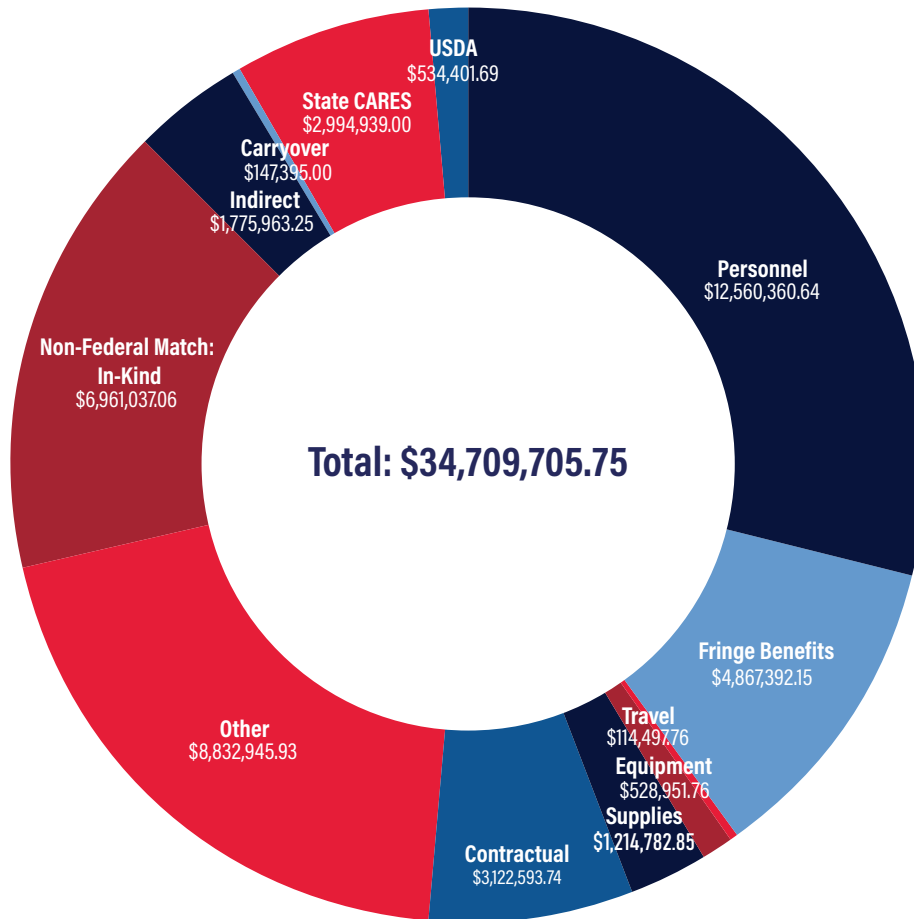
# Financial Data

## 2022-2023 Revenue

Federal \_\_\_\_\_ \$33,254,884.00  
 Non-Federal Match \_\_\_\_\_ \$5,575,200.00

**Total: \$38,830,084.00**

## 2022-2023 Expenses



## 2023-2024 Budget

Personnel _____	\$11,732,057	Contractual _____	\$2,983,763	United Way _____	\$21,500
Fringe Benefits _____	\$4,242,253	Other _____	\$1,925,878	USDA _____	\$900,000
Travel _____	\$193,000	Indirect _____	\$1,643,313	*State CARES _____	\$1,693,114
Equipment _____	\$618,989	*CRRSA Covid Funds _____	\$153,393		
Supplies _____	\$1,036,899	Non-Federal Match: In-Kind _____	\$6,547,727		
				<b>Total: \$33,294,587</b>	

\* COVID Funds & CRRSA COVID Funds were awarded by the Office of Head Start while State CARES were awarded from the state of Kentucky. These funds each have guidelines as to how they are to be used to support our program during this pandemic.

## Financial Audit Results

The agency is required to have a single audit conducted on an annual basis in accordance with the Uniform Administrative Requirements, Cost Principles, and Audit Requirements for Federal Awards. The published Independent Auditors' Report expresses an unmodified opinion on the consolidated financial statements of Audubon Area Community Services, Inc. (The Agency) and on all major federal award programs for The Agency, including Head Start. The report also stated the audit disclosed no significant deficiencies, no instances of noncompliance material to the financial statements of The Agency and no audit findings required to be reported in accordance with 2CFR Section 200.516(a).



## New Facility in Crittenden County

In a significant development for early childhood education in Crittenden County, Chapel Hill Head Start opened its doors in September 2022, offering a cutting-edge facility dedicated to nurturing young minds. This state-of-the-art center, spanning 16,000 square feet and costing \$7.2 million, represents a transformative investment in the community's educational infrastructure.

Chapel Hill Head Start's move to a purpose-built facility was a necessity due to the Early Head Start program, previously housed in mobile homes being plagued by standing water and mold issues. A \$90,000 investment to rectify these challenges underscored the urgency for improved learning environments for the 80-90 Head Start and Early Head Start students set to benefit from the new space.

The transition from Crittenden County Elementary School, where overcrowding limited Head Start programming to half-day sessions for 60 students, marks a significant upgrade. The new facility now offers full-day sessions, enhancing accessibility and accommodating more students in a conducive learning environment.

One of the standout features of Chapel Hill Head Start is its commitment to sustainability. The school installed solar panels, a move aimed at curbing energy expenses and reducing its carbon footprint. This initiative not only demonstrates fiscal responsibility but also serves as a valuable educational tool, teaching students about renewable energy and environmental stewardship from a young age.

But the school's innovation doesn't stop there. It boasts a multi-purpose room that serves as more than just a cafeteria. This versatile space doubles as a storm shelter, ensuring the safety and security of students and staff during severe weather events—a crucial feature for the Marion community.

Chapel Hill Head Start also goes above and beyond in providing transportation services for Head Start, ensuring that young children have access to quality early education without transportation barriers.

Inside the school, a dedicated STEM room sparks curiosity and creativity among students. Here, children are encouraged to explore, interact, and problem-solve, laying the groundwork for future innovators and leaders in science, technology, engineering, and mathematics.

As Crittenden County's newest educational landmark, Chapel Hill Head Start stands as a testament to Audubon Area Head Start's dedication to fostering the next generation of leaders and innovators.

# Governing Body

## Policy Council

### The Role of the Head Start Policy Council

Shared decision-making in planning is an essential element in all Head Start programs. While it is common for the agency board and staff to share the responsibilities for planning in most organizations, in Head Start organizations this process is also shared with the Head Start Policy Council. 71% of Audubon Area Head Start Policy Council members were parents of children currently enrolled in the program. With a majority of members as parents, the Policy Council is guaranteed to represent the needs of the children and families.

## Policy Council Officers

Bristen Holeman-  
Chairperson

Alannah Fazzino-  
Vice-Chairperson

Kaitlyn Blandford-  
Secretary

Rebecca Alfred-  
Parliamentarian

## Ex-Officio

Mary Danhauer, AACS Board Chairperson

Stephen Harvey, WKU Rep.

## Community Representatives

- Gwendolyn Ochoa
- Leandra Keister
- Ka'Dessa Snorton
- Silas Matchem Sr.
- Quiche Matchen
- Ashley SESCO
- Tracey Dismore
- Nikki Boarman
- Dewayne Johnson

## Parent Representatives

- Savannah Wells
- Teresa Rubalcava
- Karrisa Hightower
- Serenity Hulsey
- Dana Flint
- Shelby Leach

## Parent Alternates

- Micah Blevins
- Amy Bosecker
- Destiny Myers
- Julianna Suarez-Ramos
- Skylar Price
- Kendra Owens
- Paige Atchison
- Windy Deibler
- Savannah Leach
- Stacy Reed

---

## Board Officers

Ms. Mary Danhauer  
Chairperson

Dr. Lisa Reece  
Vice Chairperson

Mr. Tony Felker  
Secretary

---

## Early Childhood Committee

The Early Childhood Committee of the Board works closely with the Policy Council in the oversight and planning of the Audubon Area Head Start Program.

- Mary Danhauer - Chairperson
- Phyllis Church
- Tony Felker
- Cheston Hoover
- Dr. Bridget Murray
- Dr. James Tidwell
- Bristen Holeman



1700 West 5th Street  
Owensboro, KY 42301  
270-686-1649

[audubon-area.com/headstart](http://audubon-area.com/headstart)  
 [facebook.com/audubonareaheadstart](https://facebook.com/audubonareaheadstart)